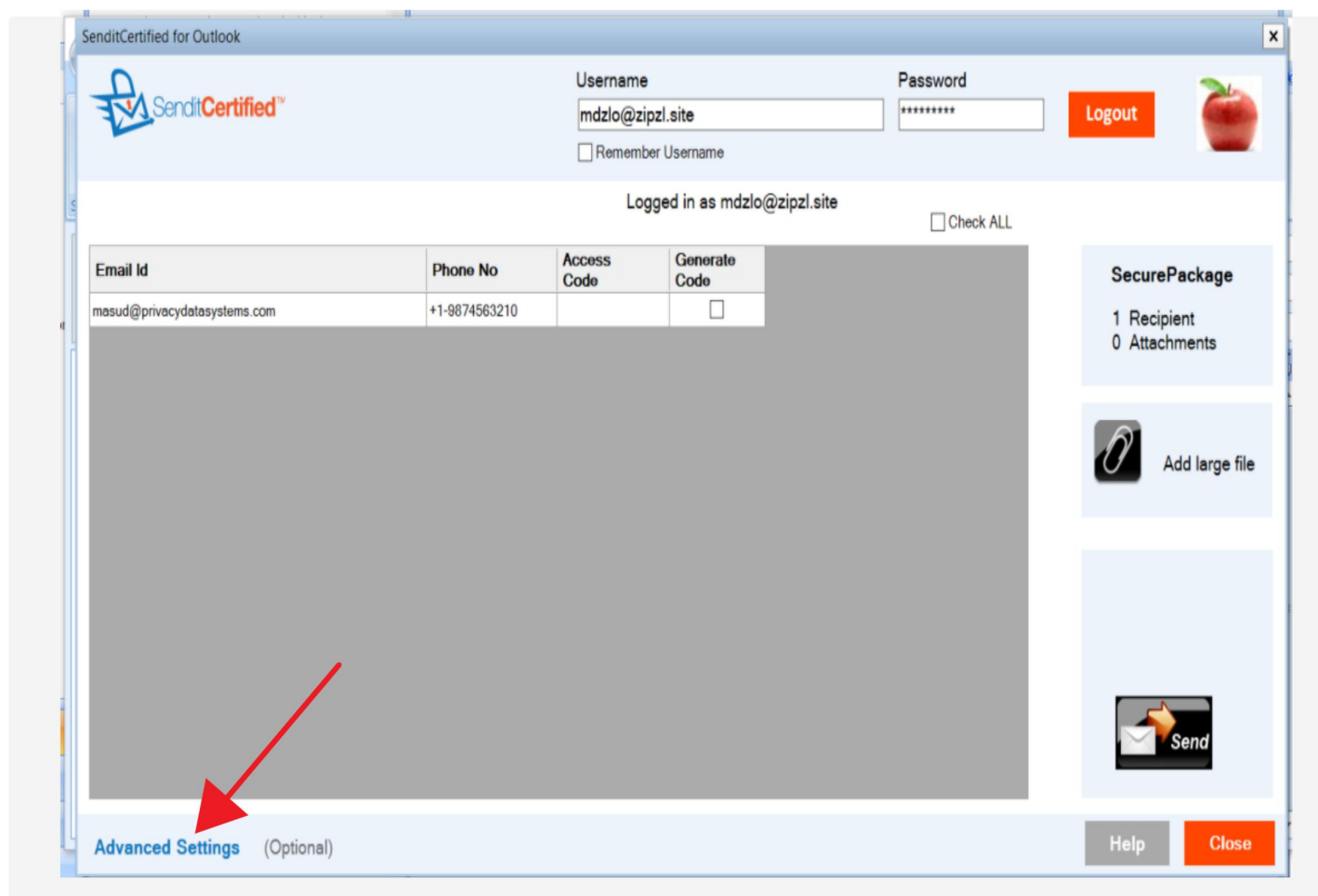
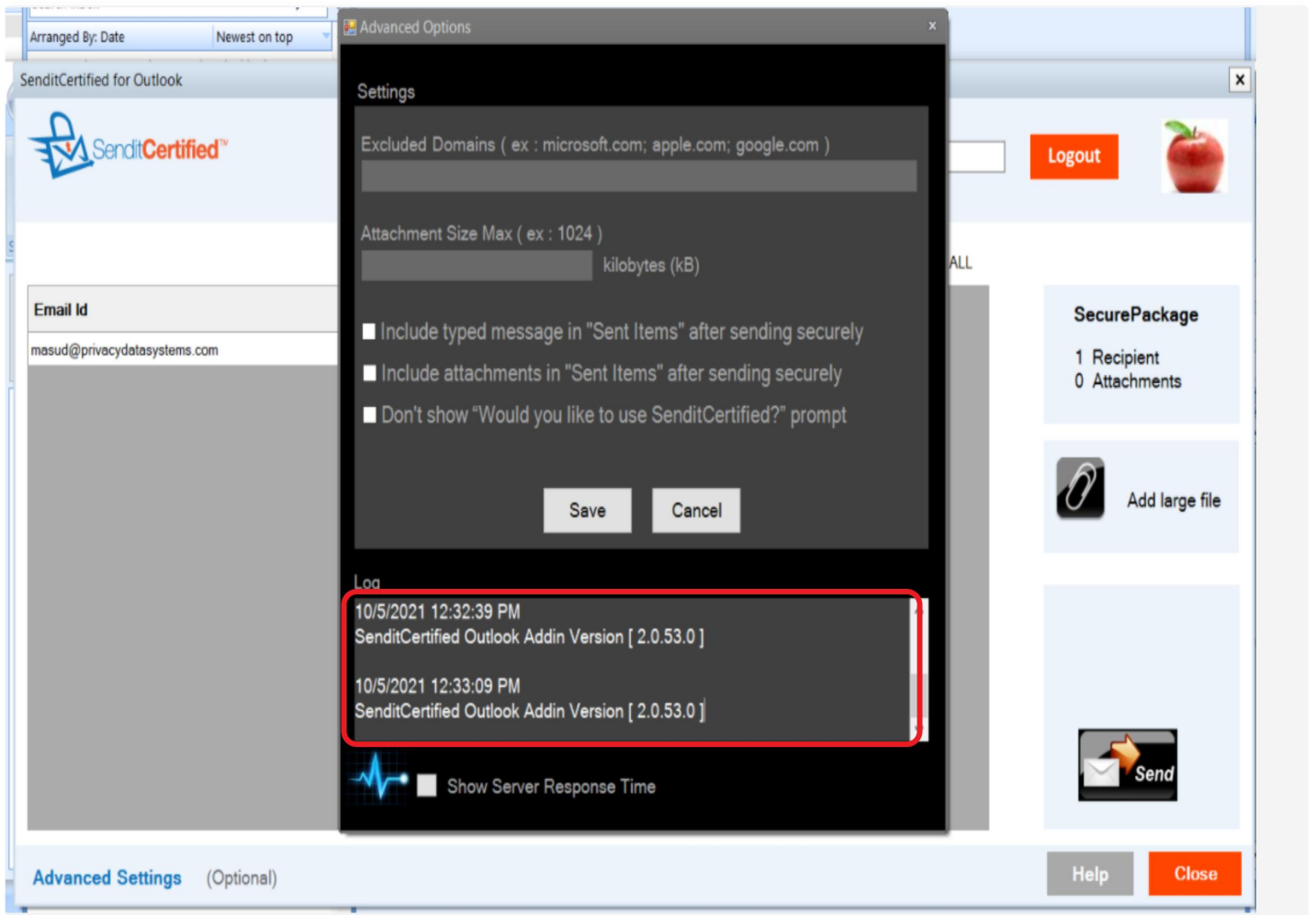


How do I check the SenditCertified for Outlook installed version?



To determine the version of SenditCertified for Outlook that you have installed, follow these steps:

1. Start a new email.
2. Click the SenditCertified Icon in the new mail window.
3. In the SenditCertified for Outlook window, click "**Advanced Settings**"



The Version number will be displayed in the "Log" area of the Advanced Options window.